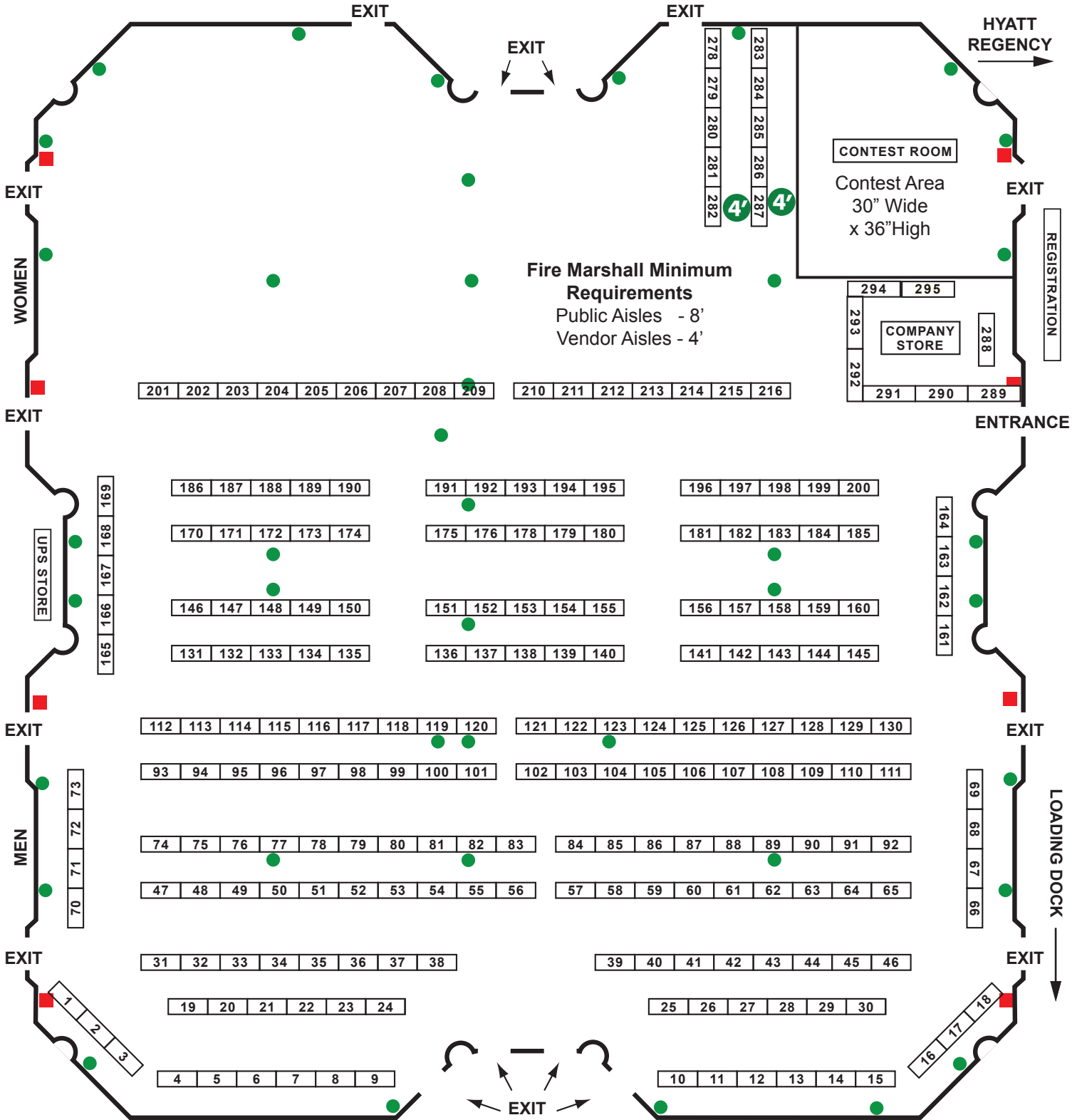




EXHIBIT HALL



Fire Marshall Minimum Requirements
 Public Aisles - 8'
 Vendor Aisles - 4'

201 | 202 | 203 | 204 | 205 | 206 | 207 | 208 | 209 | 210 | 211 | 212 | 213 | 214 | 215 | 216

186 | 187 | 188 | 189 | 190

191 | 192 | 193 | 194 | 195

196 | 197 | 198 | 199 | 200

170 | 171 | 172 | 173 | 174

175 | 176 | 178 | 179 | 180

181 | 182 | 183 | 184 | 185

146 | 147 | 148 | 149 | 150

151 | 152 | 153 | 154 | 155

156 | 157 | 158 | 159 | 160

131 | 132 | 133 | 134 | 135

136 | 137 | 138 | 139 | 140

141 | 142 | 143 | 144 | 145

112 | 113 | 114 | 115 | 116 | 117 | 118 | 119 | 120 | 121 | 122 | 123 | 124 | 125 | 126 | 127 | 128 | 129 | 130

93 | 94 | 95 | 96 | 97 | 98 | 99 | 100 | 101 | 102 | 103 | 104 | 105 | 106 | 107 | 108 | 109 | 110 | 111

74 | 75 | 76 | 77 | 78 | 79 | 80 | 81 | 82 | 83 | 84 | 85 | 86 | 87 | 88 | 89 | 90 | 91 | 92

47 | 48 | 49 | 50 | 51 | 52 | 53 | 54 | 55 | 56 | 57 | 58 | 59 | 60 | 61 | 62 | 63 | 64 | 65

31 | 32 | 33 | 34 | 35 | 36 | 37 | 38

39 | 40 | 41 | 42 | 43 | 44 | 45 | 46

19 | 20 | 21 | 22 | 23 | 24

25 | 26 | 27 | 28 | 29 | 30

4 | 5 | 6 | 7 | 8 | 9

10 | 11 | 12 | 13 | 14 | 15

EXHIBITORS REQUIREMENTS

By the Hyatt Regency and the Fire Marshall.

1. Public aisle widths must be 8 feet wide.
2. The vendor's aisle (behind tables) must be 4 feet wide
3. Nothing may be left in the aisles.
4. Store equipment and merchandise under the tables, not in the vendor's aisle between the tables or in public aisles.

- 110 Electrical Outlet
- Fire Extinguisher

Russ Clover 3-17-2017
 707-791-7350 adobehse@sonic.net

LOADING INSTRUCTIONS - OVER →